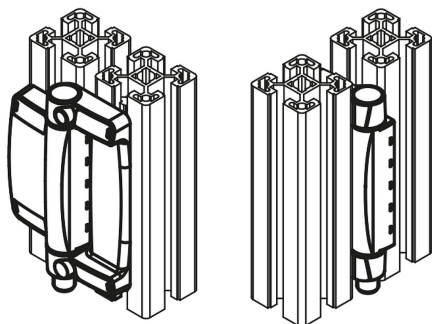


Security hinge switches

Item description/product images



Description

Material:

Housing, die-cast zinc.

Housing cover, plastic, self-extinguishing.

Hinge bolts, die-cast zinc/steel C45.

Contacts, silver-nickel alloy 10.

Note:

The security hinge switches are used for monitoring the position of pivoting safety doors, protective covers and protective hoods. The security is monitored directly in the hinge.

The switching angle is freely adjustable over the entire working range. A mounting aid ensures quick alignment with doors and posts.

The additional hinges have the same appearance and dimensions as the security hinge switches.

Application:

- Special machine construction
- Electronics industry
- Packaging machines
- Enclosures/profile systems
- Machine tools
- Measuring, processing, testing and laboratory technology

Assembly:

4x DIN 7984 or DIN EN ISO 4762 M6 socket head screws,

Tightening torque 4.3 Nm

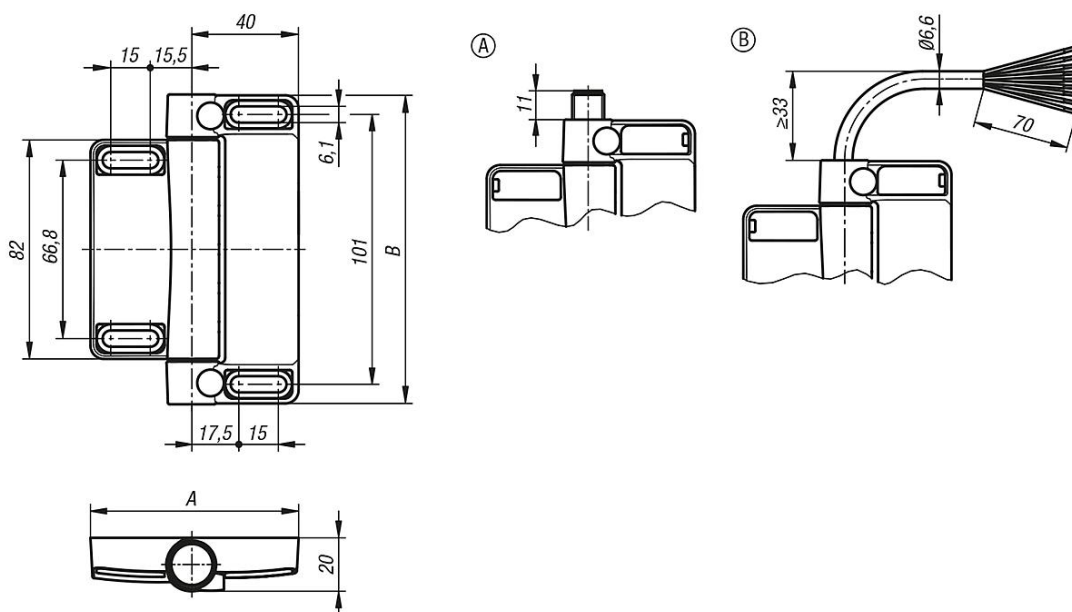
General assembly instructions can be found in the accompanying operating instructions.

Advantages:

- Suitable for securing pivot flaps and gates
- Minimum assembly required, especially on conventional aluminium profiles
- Optimum integration into the surrounding structure
- Additional protection against tampering
- Hardly any mechanical wear

Security hinge switches

Drawings



Overview of items

Security hinge switches

Order No.	Item	Form	A	B	Default setting	Contacts	Connection type	Connection position
K1499.781161111	security hinge switch	A	78	116	external mounting	1C / 20	connector	bottom
K1499.781161112	security hinge switch	A	78	116	external mounting	1C / 20	connector	top
K1499.781162111	security hinge switch	A	78	116	universal	1C / 20	connector	bottom
K1499.781162112	security hinge switch	A	78	116	universal	1C / 20	connector	top
K1499.781161121	security hinge switch	B	78	116	external mounting	1C / 20	cable	bottom
K1499.781161122	security hinge switch	B	78	116	external mounting	1C / 20	cable	top
K1499.781162121	security hinge switch	B	78	116	universal	1C / 20	cable	bottom
K1499.781162122	security hinge switch	B	78	116	universal	1C / 20	cable	top
K1499.78116	additional hinge	-	78	116	-	-	-	-