

Self-aligning pads self-righting

Item description/product images



Description

Material:

Form C and F:

Ball steel, ball seat high-carbon steel.

Form G and J:

Ball high-carbon steel, ball seat steel.

Version:

Form C and F:

Ball hardened and black oxidised, ball seat phosphated.

Form G and J:

Ball phosphated, ball seat hardened and black oxidised.

Note:

The self-aligning pads serve as stops, rests and thrust pads in fixture construction. The seating face returns to the start position when the load is removed.

Ball secured against rotation.

Drawing reference:

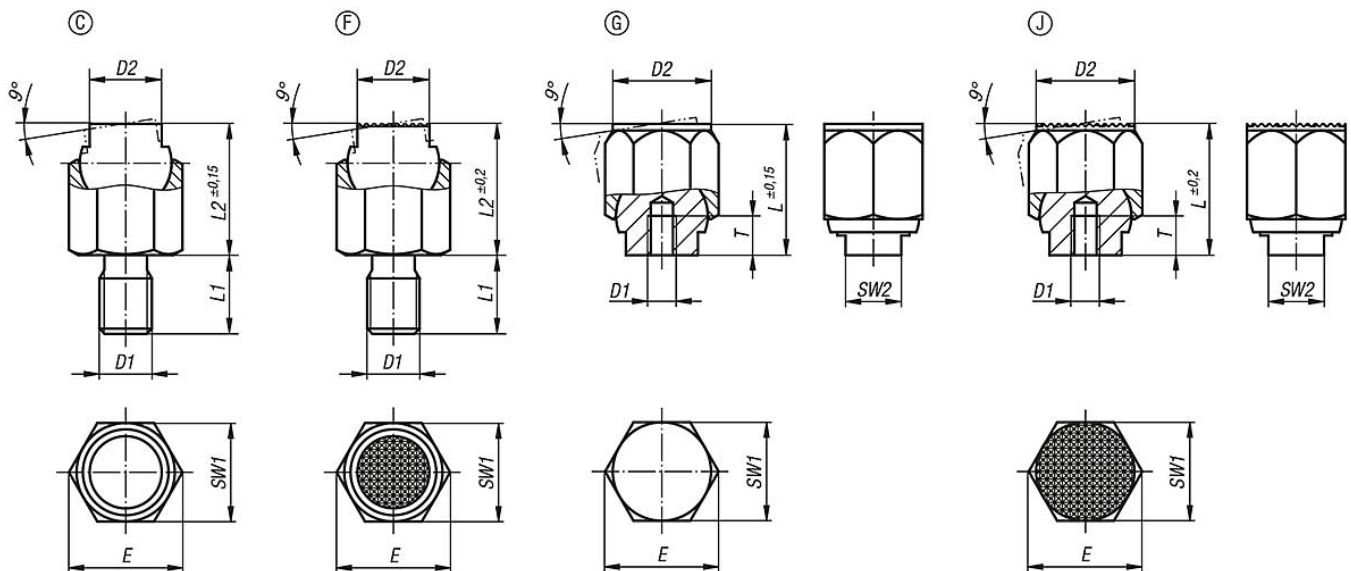
Form C: male thread, flattened ball, smooth

Form F: male thread, flattened ball, diamond grip

Form G: press fit, flattened ball, smooth

Form J: press fit, flattened ball, diamond grip

Drawings



Overview of items